

Download CipherConnect Pro2 to Android Devices

Prior to Use of CipherConnect Pro 2

CipherConnect Pro2 is a COM-to-key utility designed for CipherLab cordless scanners (e.g. 156x and 166x) to work as an input device for the Android phone and tablet, enabling intensive data collection via Bluetooth Serial Port connection.

CipherConnect Pro2 is ready and available via Google Play Store. Go online and look for the applications:

CipherConnect Pro2

An advanced app that especially can help users get rid of mundane Bluetooth connection settings by just scanning the 1D/2D setting barcodes. It supports Android version 4, 5 or 6.

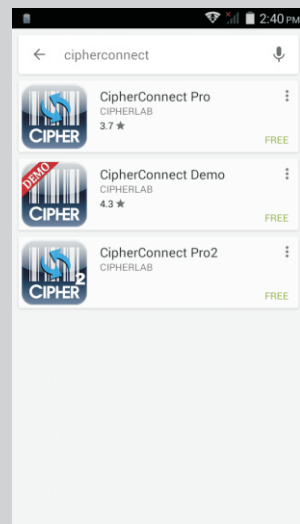
Follow the instructions below to download CipherConnect Pro2.

Note Get the latest update directly from CipherConnect Pro2 Online Help site at <http://connect2.cipherlab.com> or Google Play Store.

Download

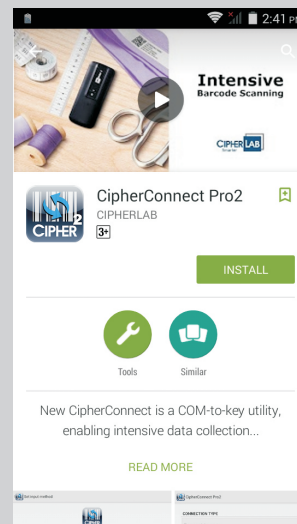
Go to **Play Store** and sign in with your Google account.

Type "cipherconnect" in the text field to search. Click the CipherConnect Pro2 icon.



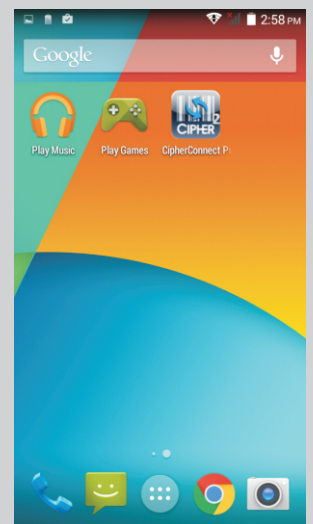
1

Click **INSTALL** to proceed to download the app.



2

After the app is downloaded, the CipherConnect Pro2 icon appears on the screen. Click it to start the app.



3

Configure CipherConnect Pro2 for Android Devices

Preparation for Scanner

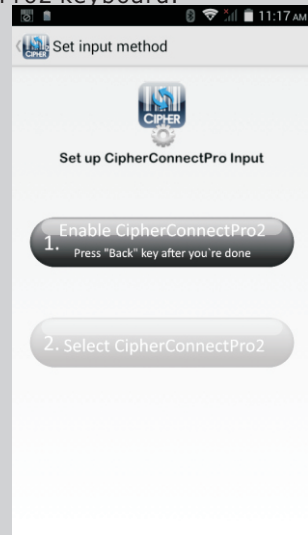
CipherConnect Pro2 is ready for use after successful downloads via Google Play Store. Working with CipherLab cordless scanners (156x and 166x), it can deliver optimal performance.

- 1 Turn on the scanner, and wait until the LED indicator becomes flashing blue.
- 2 Press the trigger to scan the setting barcode to set the output interface as "BT SPP Slave".
- 3 The scanner is active at power-on for two minutes by default, waiting for a connection request from the mobile phone. Follow the instructions below for Connection and Configuration on the mobile device.

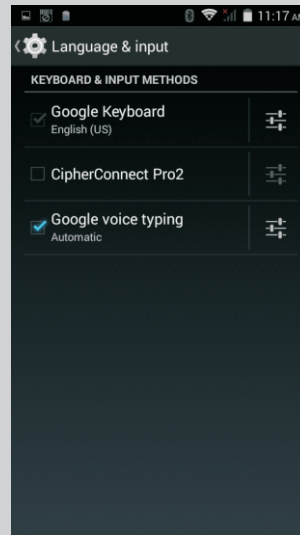
Note Note You may use your own preset PIN code with the scanner. Yet, dynamic input of PIN is also supported. Refer to a separate scanner user guide for complete settings.

Keyboard Configuration

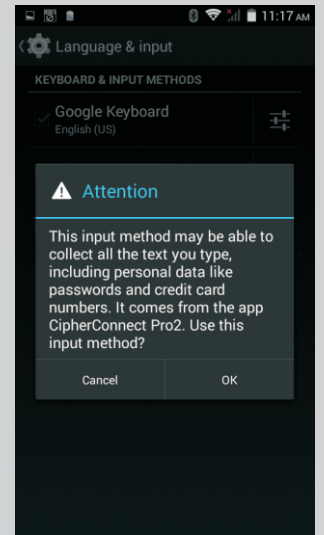
For the first time, you'll be prompted to set the input method. Click the [1] button to enable the CipherConnect Pro2 keyboard.



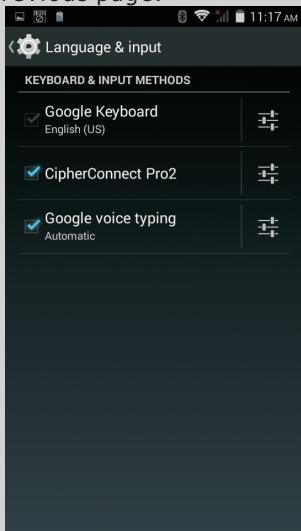
Then click to check the CipherConnect Pro2 keyboard.



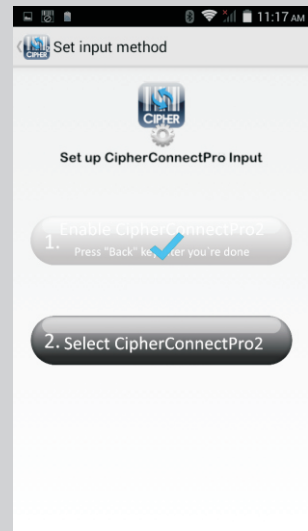
Click OK to continue.



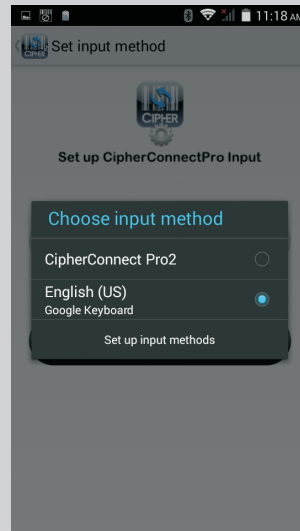
Make sure the CipherConnect Pro2 keyboard is enabled. Click [Back] to return to the previous page.



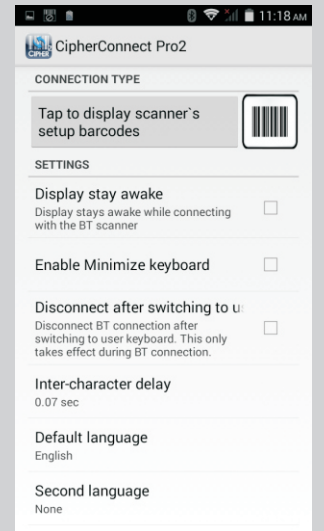
After enabling CipherConnect Pro2 keyboard, please click the [2] button for keyboard selection.



Click CipherConnect Pro2 to set it as the input method.



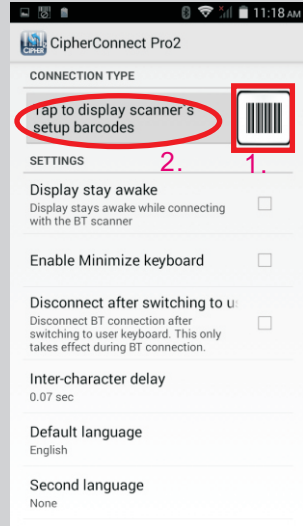
The keyboard configuration is done, and then the function menu displays.



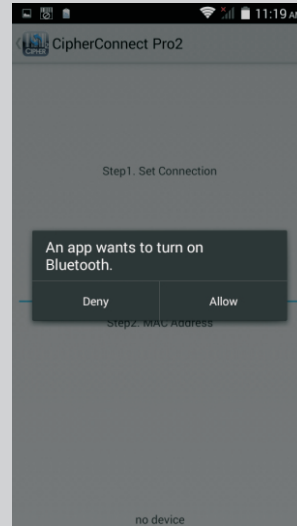
Making Connection between Scanner and Smart Device

Users are free to decide between the three connection types depending on personal preference.

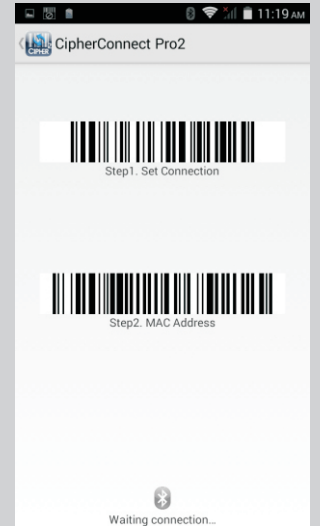
<1D Setting Barcodes>
Click the barcode icon to switch connection types. Then click the grey button to display 1D setup barcodes.



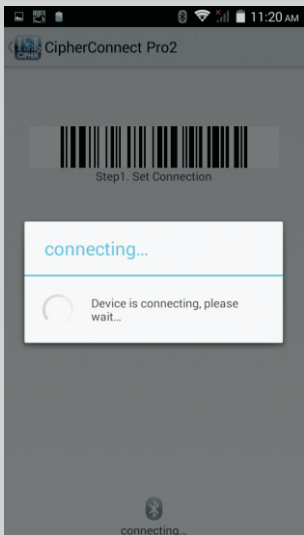
This message shows up if you haven't turned on the BT module of the smart device. Click Allow to continue.



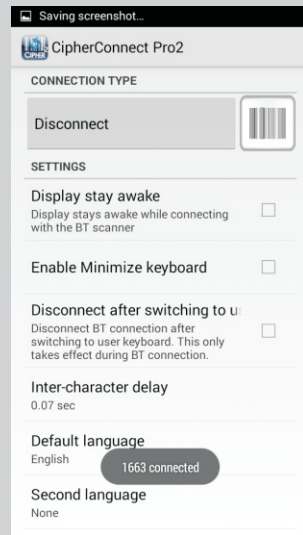
The setting barcodes show up when you select the 1D barcode connection type. To make a BT connection, scan them in sequence.



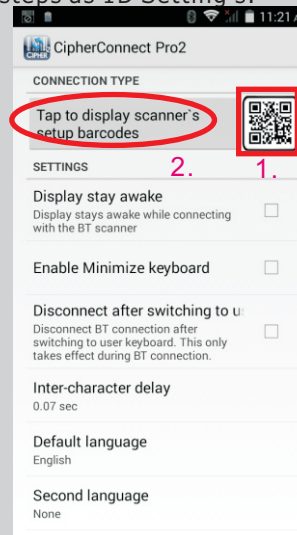
Connection between your scanner and the smart device is being established.



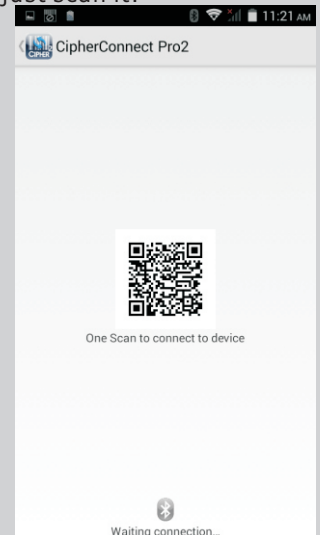
When the connection is made, a message will appear briefly.



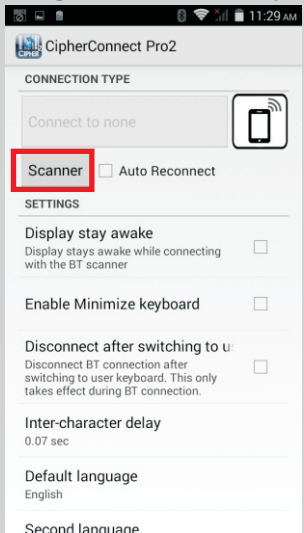
<2D Setting Barcode>
If you prefer scanning a 2D barcode to make Bluetooth connection, follow the same steps as 1D Setting's.



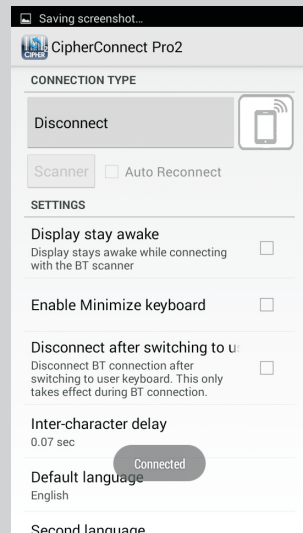
The setting barcode shows up when you select the 2D barcode connection type. To make a BT connection, just scan it.



<Manual Pairing>
Click the Scanner button. (If the scanner output interface is not SPP Slave, refer to **Configure BT scanner.**)

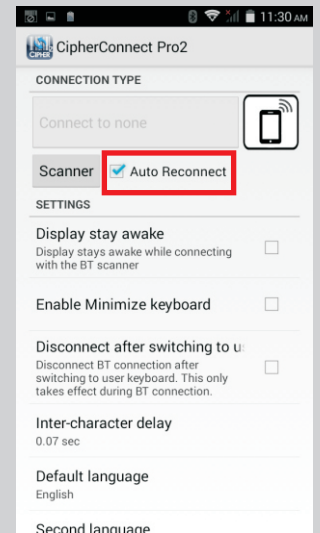


A message will appear briefly after the connection is made successfully.

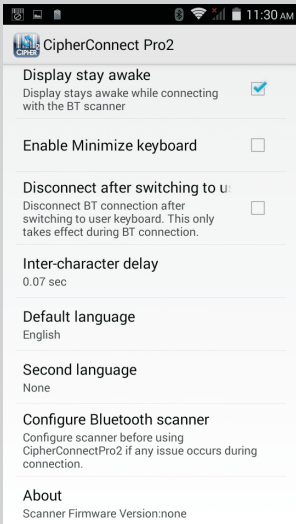


Tip
Functions on the menu.

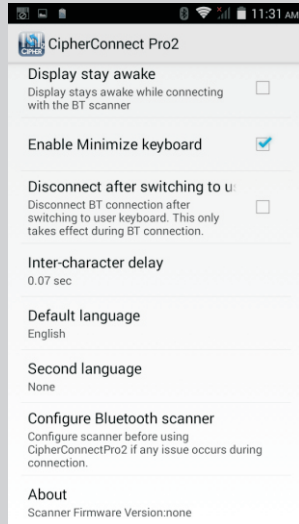
For manual pairing, enable **Auto Reconnect** to have the scanner recover from disconnection automatically.



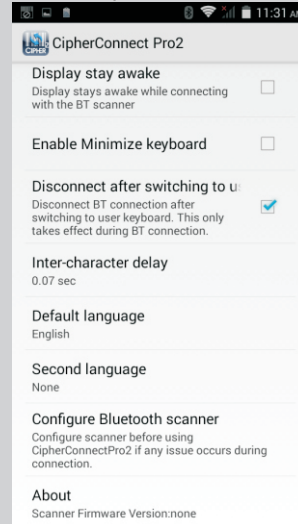
Display Stay Awake
Check it to have the screen keep displaying.



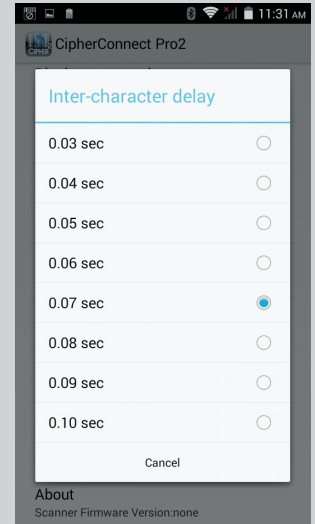
Enable Minimize Keyboard
Check it to minimize the on-screen keyboard.



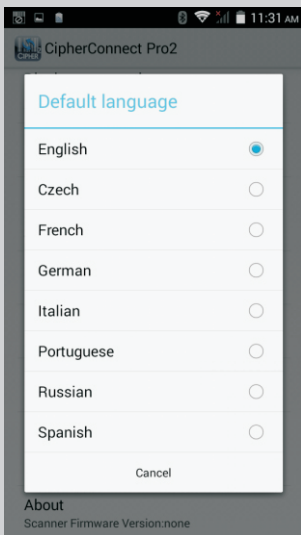
Disconnect after Switching to User Keyboard
Check it to disconnect the BT connection after switching to user keyboard.



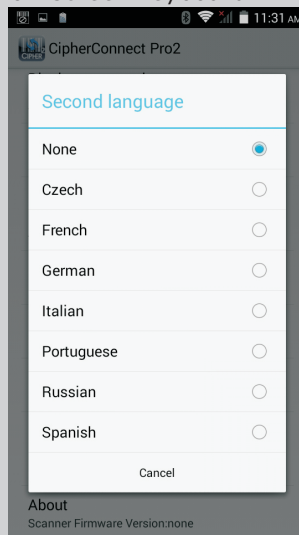
Inter-character Delay
Click to specify the input interval between two characters.



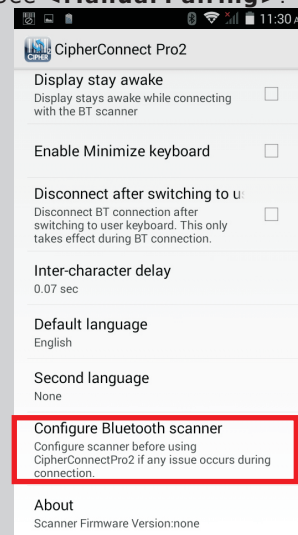
Default Language
Click to specify the default language.



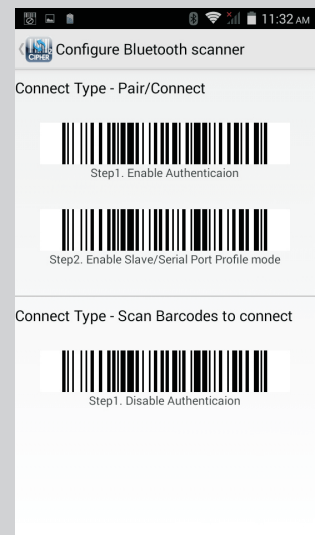
Second Language
With the second language selected, you can switch between languages via the on-screen keyboard.



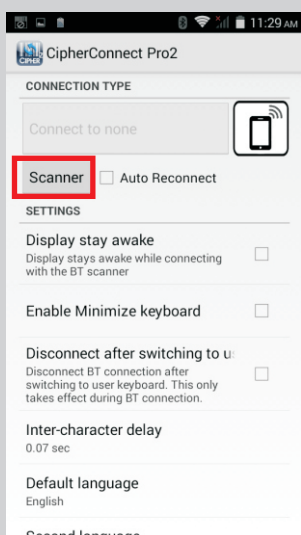
Configure BT Scanner
Click to configure the scanner when you decide to pair manually. See <Manual Pairing>.



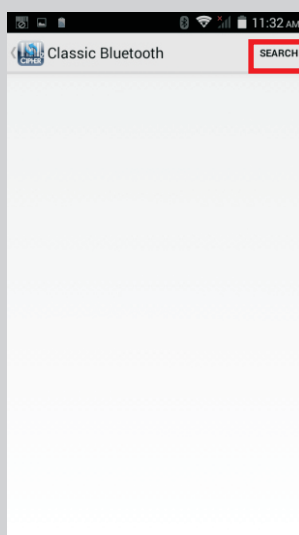
Scan the barcodes "1.Enable Authentication" and "2.Enable Slave/Serial Port Profile mode" in sequence.



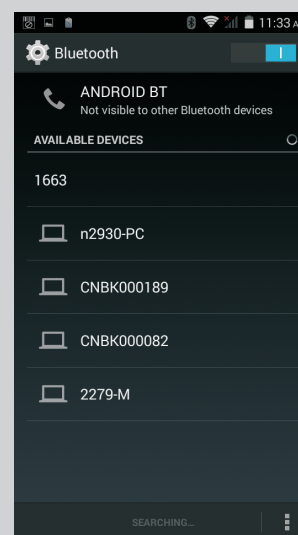
Click the Scanner button.



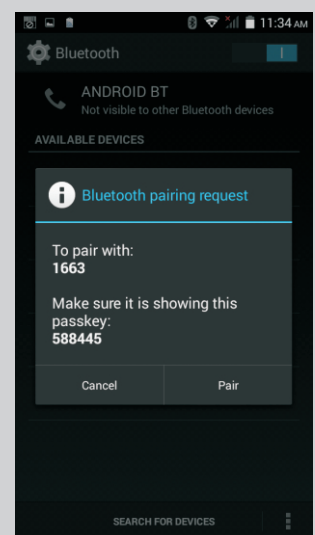
Click "SEARCH" to discover BT devices nearby.



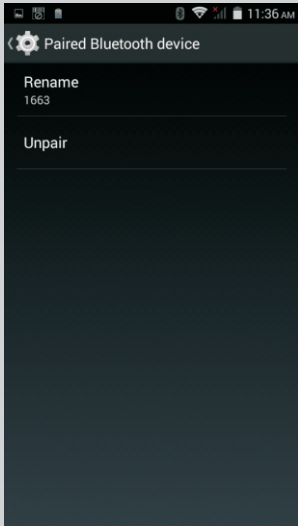
Click the discovered 1663 scanner on the Bluetooth setting menu to proceed with pairing process.



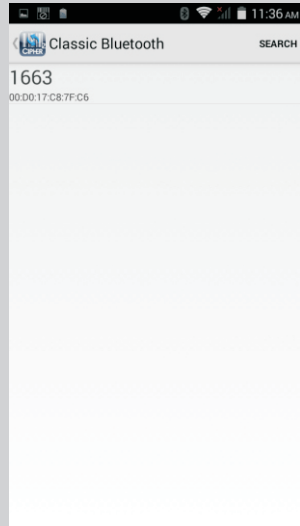
When you see the message, click Pair.



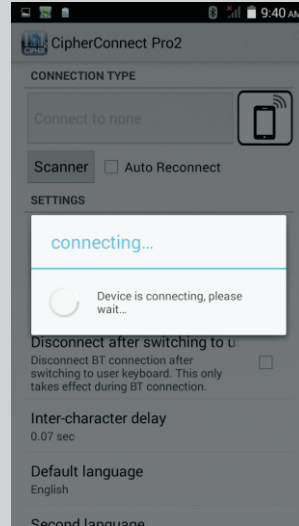
Now the pairing between your smart device and 1663 is made. Then return to the previous page.



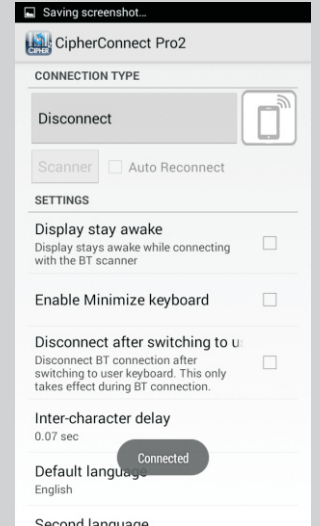
Click the paired 1663 to make a connection.



BT connection is being made.



When the connection is made, a message will appear briefly.



We suggest that you enable [Auto Reconnect]. After initial connection, the smart device can automatically connect to the scanner upon execution, or resume connection once the error is resolved.

With Transmit Buffer enabled on the scanner you can keep scanning data even when getting out of range.



Connection Errors:

- Error** The scanner is getting out of range.
Action Get back to range ASAP.

- Error** The scanner becomes inactive after standing by for two minutes at power-on.
Action Press the blue key to wake up the scanner.

- Error** The scanner shuts down automatically after idling for ten minutes.
Action Press the [Power] key to turn it on.

About

Click to view information about CipherConnect Pro2.



Learn the **CipherConnect Pro2** icon:

	Indicates the mobile phone is connected with the scanner.
	Indicates the mobile phone is connecting to the scanner.
	Indicates the mobile phone is disconnected from the scanner. Check if any of the connection error conditions is met.



Copyright © 2016
CipherLab Co., Ltd.